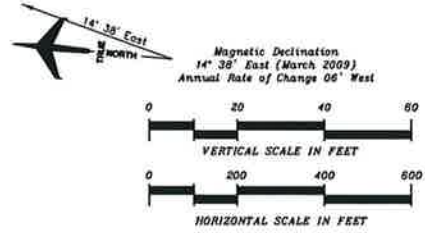


Objects Description/Elevation	Ultimate Part 77 20:1 Approach	Ultimate 20:1 TSS	Existing 20:1 Approach	Existing 20:1 TSS	Proposed Disposition
1. BUILDING EL 1854	3'	NONE	NONE	NONE	ADD OBST. LTD./RELOCATE
5. TREES EL 1935	± 26'	16'	NONE	NONE	TRIM/REMOVE TREES
6. TREES EL 1957	± 16'	6'	2'	NONE	TRIM/REMOVE TREES

- GENERAL NOTES:**
- Obstructions, clearances, and locations are calculated from ultimate runway end elevations and ultimate approach surfaces, unless otherwise noted. Road obstructions reflect a safety clearance of 10' for unimproved roads or private roads, 15' for noninterstate roads, 17' for interstate roads, and 23' for railroad.
  - Depiction of features and objects within the primary, transitional, and horizontal Part 77 surfaces, is illustrated on the AIRPORT AIRSPACE DRAWING.
  - AC 150/5300-13 CHG 12 Appendix-2, Runway Approach/Departure Requirements (Runway ADR).



No.	REVISIONS	DATE	BY	APPD.

**ANGWIN-PARRETT FIELD AIRPORT**  
**RUNWAY 34 VISUAL**  
**APPROACH SURFACE DRAWING**  
 Angwin, California, USA

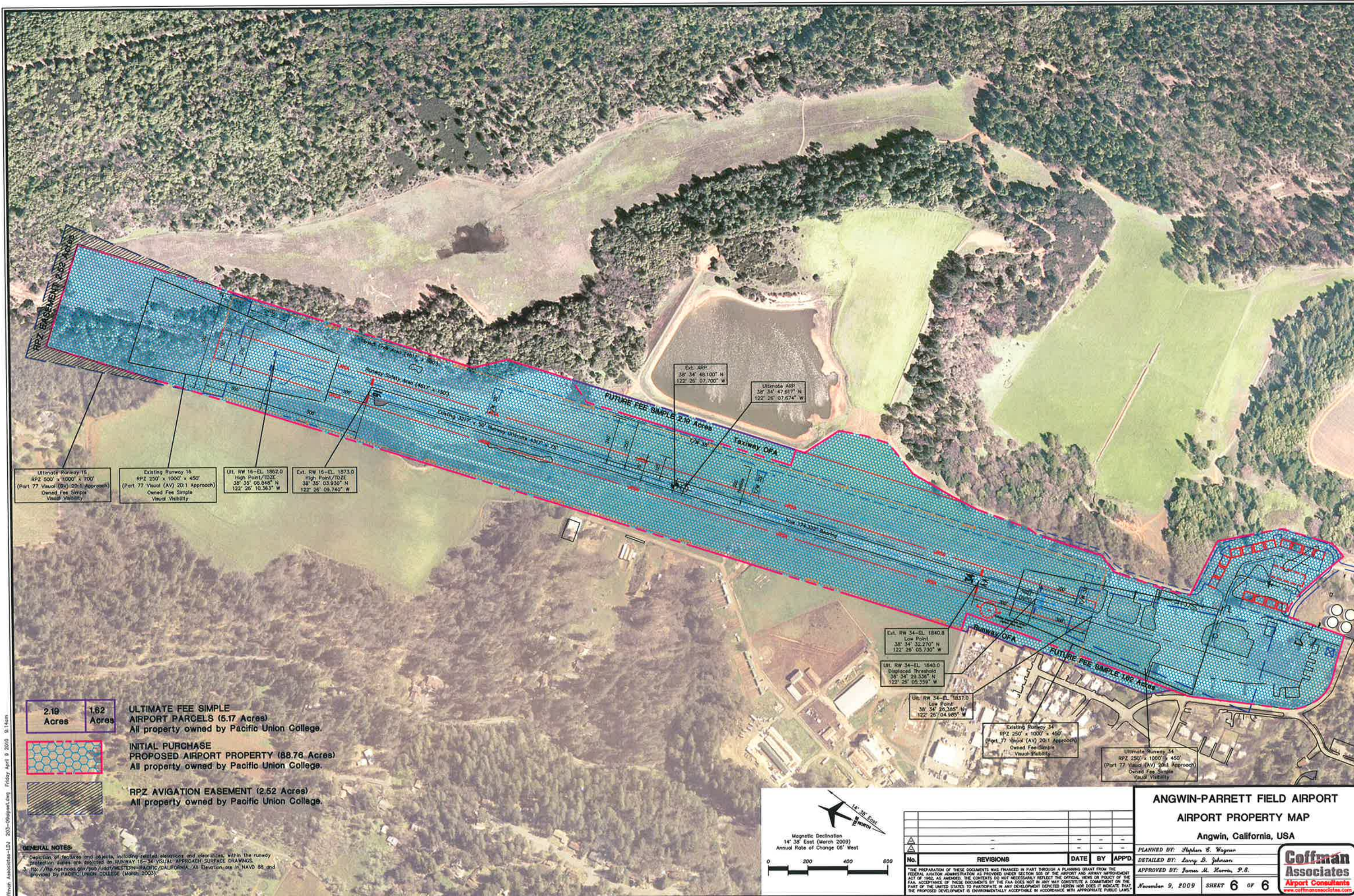
PLANNED BY: Stephen S. Wagner  
 DETAILED BY: Larry B. Johnson  
 APPROVED BY: James H. Harris, P.E.

November 9, 2009 SHEET 4 OF 6

**Coffman Associates**  
 Airport Consultants  
 www.coffmanassociates.com

Coffman Associates-03\_203-0001-01.dwg Friday, April 9, 2010 9:14am





Ultimate Runway 15  
RPZ 500' x 1000' x 700'  
(Part 77 Visual (AV) 20:1 Approach)  
Owned Fee Simple  
Visual Visibility

Existing Runway 15  
RPZ 250' x 1000' x 450'  
(Part 77 Visual (AV) 20:1 Approach)  
Owned Fee Simple  
Visual Visibility

Ult. RW 15-EL. 1862.0  
High Point/TDZE  
38° 35' 08.848" N  
122° 26' 10.363" W

Ext. RW 15-EL. 1873.0  
High Point/TDZE  
38° 35' 03.930" N  
122° 26' 09.740" W

2.19 Acres	1.62 Acres	<b>ULTIMATE FEE SIMPLE AIRPORT PARCELS (6.17 Acres)</b> All property owned by Pacific Union College.
		<b>INITIAL PURCHASE PROPOSED AIRPORT PROPERTY (88.76 Acres)</b> All property owned by Pacific Union College.
		<b>RPZ AVIGATION EASEMENT (2.62 Acres)</b> All property owned by Pacific Union College.

**GENERAL NOTES:**

1. Depiction of features and objects, including related elevations and clearances, within the runway protection zones are depicted on RUNWAY 15-34 VISUAL APPROACH SURFACE DRAWINGS.

2. <http://www.faa.gov/proc/proc/proc/proc/WESTERN-PACIFIC-CALIFORNIA>. All Elevation, or NAVD 88, and provided by PACIFIC UNION COLLEGE (March 2003).

Ext. ARP  
38° 34' 48.100" N  
122° 26' 07.700" W

Ultimate ARP  
38° 34' 47.617" N  
122° 26' 07.674" W

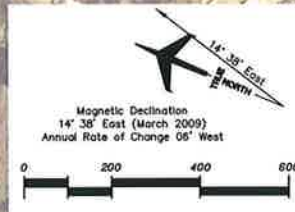
Ext. RW 34-EL. 1840.8  
Low Point  
38° 34' 32.270" N  
122° 26' 05.730" W

Ult. RW 34-EL. 1840.0  
Displaced Threshold  
38° 34' 23.350" N  
122° 26' 05.359" W

Ult. RW 34-EL. 1837.0  
Low Point  
38° 34' 26.385" N  
122° 26' 04.865" W

Existing Runway 34  
RPZ 250' x 1000' x 450'  
(Part 77 Visual (AV) 20:1 Approach)  
Owned Fee Simple  
Visual Visibility

Ultimate Runway 34  
RPZ 250' x 1000' x 450'  
(Part 77 Visual (AV) 20:1 Approach)  
Owned Fee Simple  
Visual Visibility



No.	REVISIONS	DATE	BY	APPD.

THE PREPARATION OF THESE DOCUMENTS WAS FINANCED IN PART THROUGH A PLANNING GRANT FROM THE FEDERAL AVIATION ADMINISTRATION AS PROVIDED UNDER SECTION 505 OF THE AIRPORT AND AIRWAY IMPROVEMENT ACT OF 1982, AS AMENDED. THE CONTENTS DO NOT NECESSARILY REFLECT THE OFFICIAL VIEWS OR POLICY OF THE FAA. ACCEPTANCE OF THESE DOCUMENTS BY THE FAA DOES NOT IN ANY WAY CONSTITUTE A COMMITMENT ON THE PART OF THE UNITED STATES TO PARTICIPATE IN ANY DEVELOPMENT DELETED HEREIN NOR DOES IT INDICATE THAT THE PROPOSED DEVELOPMENT IS ENVIRONMENTALLY ACCEPTABLE IN ACCORDANCE WITH APPROPRIATE PUBLIC LAWS.

**ANGWIN-PARRETT FIELD AIRPORT  
AIRPORT PROPERTY MAP**  
Angwin, California, USA

PLANNED BY: Stephen S. Wagner  
 DETAILED BY: Larry S. Johnson  
 APPROVED BY: James M. Harris, P.E.  
 November 9, 2009 SHEET 6 OF 6



Goffman Associates-LDJ 203-0909000.dwg Friday April 9 2010 9:14am